

26
NEWTON



26

NEWTON

STAND ABOVE THE REST. PEER DOWN ON THE ORDINARY. AT THE PEAK OF OPULENCE, THE SUMMIT OF PRESTIGE. ECSTATIC WITH THE EUPHORIA OF SUCCESS. A FEELING INCOMPARABLE. KNOWING THAT YOU'VE ACHIEVED WHAT FEW CAN. DON'T LET THE LIMIT STAND IN YOUR WAY. TAKE A BREATH. REACH EVEN HIGHER. REACH FOR A BREAKTHROUGH IN LUXURIOUS LIVING. REACH FOR THE SKY.

THE PLEASURES OF LIFE ARE
MAXIMISED TO THE LIMIT AT
26 NEWTON. WHERE OTHERS
WOULD HAVE STOPPED, WE
PUSHED FORWARD IN OUR
STRIVE TO PERFECT THE ART OF
LUXURIOUS LIVING, MOTIVATED
BY OUR UNENDING DRIVE TO
REACH BEYOND ANY DEGREE OF
OPULENCE EVER WITNESSED.

EXCLUSIVITY INCLUSIVE

WITH 26 NEWTON, OUR QUEST IS ACCOMPLISHED.



EXCLUSIVE PRIVILEGE
PRESTIGE INCLUSIVE

AESTHETIC INDULGENCE TO THE
MASSES. LIFESTYLE INDULGENCE
TO THE DISCERNING FEW.



ARTIST'S IMPRESSION



THE 26-STOREY SKYSCRAPER CONSISTS OF 180 UNITS RANGING FROM 1, 2 AND 2+1-BEDROOM TO DUPLEX PENTHOUSE. ITS MODERN FUTURISTIC ARCHITECTURE SYMBOLISES THE PINNACLE OF COSMOPOLITAN LIVING. AN ICON OF PRESTIGE UNATTAINABLE TO MOST.



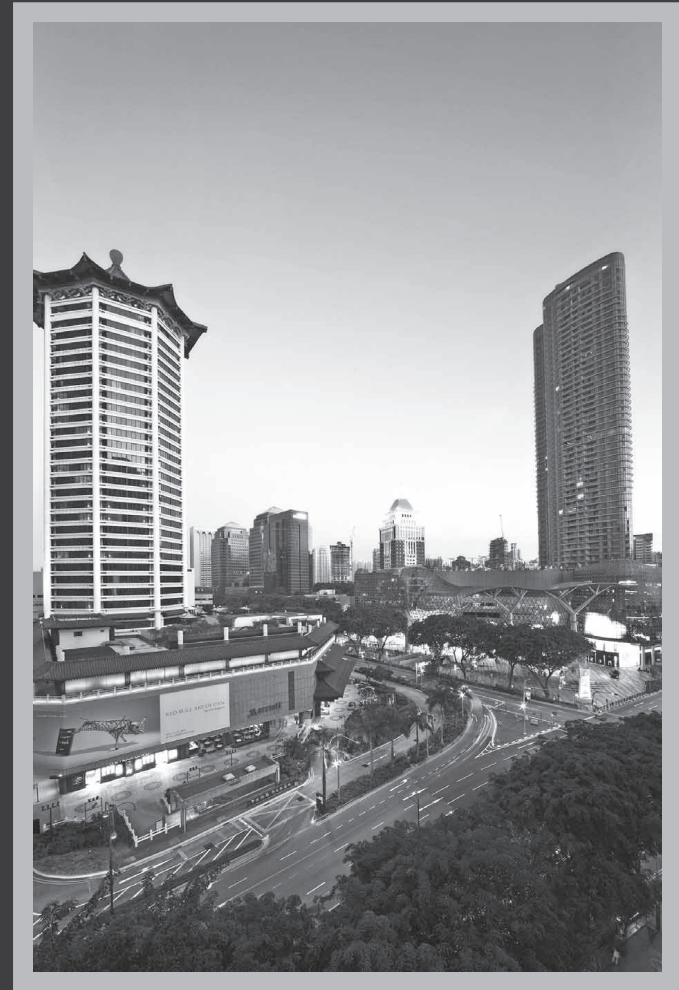


EXCLUSIVE NEIGHBOURHOOD
CONVENIENCE INCLUSIVE

AT PRIME DISTRICT 11, CONVENIENCE IS NOT
A PRIVILEGE. IT IS A WAY OF LIFE. FLANKED ON
ALL SIDES BY GASTRONOMICAL, RETAIL AND
ENTERTAINMENT AMENITIES, YOUR EVERY WANT
AND NEED WILL BE SATISFIED WITH ABSOLUTE EASE.



IN PROXIMITY ARE ORCHARD ROAD, CENTRAL BUSINESS DISTRICT AND INTEGRATED RESORTS. NOVENA SQUARE AND NEWTON FOOD CENTRE ARE WITHIN STEPS. MAJOR EXPRESSWAYS ARE MINUTES AWAY. NEWTON AND NOVENA MRT STATIONS WITHIN WALKING DISTANCE. THE COVETED NEWTON PRECINCT IS ALSO HOME TO VARIOUS TOP SCHOOLS. NEARBY BOTANIC GARDENS PROVIDE A REFRESHING RESPITE FROM THE URBAN BUZZ.

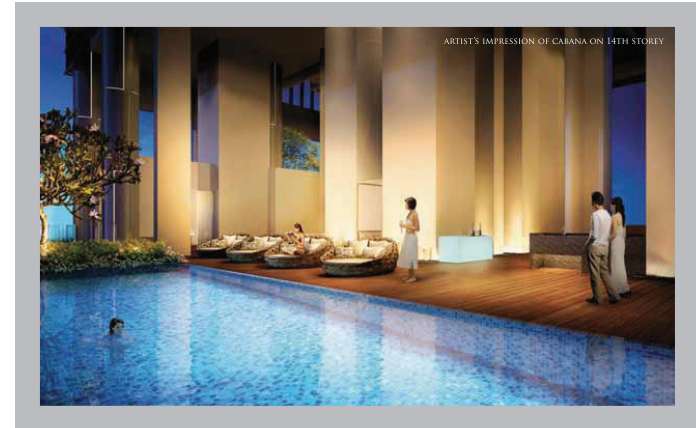




EXCLUSIVE INDULGENCE
PLEASURE INCLUSIVE

A SPECTACULAR SKY TERRACE
AT THE 14TH FLOOR FLAUNTS
AN EXTRAORDINARY VIEW
WITH A SKY POOL PROVIDING
AN OASIS IN PARADISE.





FEAST ON FREE-FLOW EXHILARATION. LIVE FOR ENJOYMENT. CABANA, GYMNASIUM AND BBQ_CORNER AT YOUR COMMAND. PURE INDULGENCE IN LIFE'S FINEST AT 26 NEWTON.





ARTIST'S IMPRESSION



EXCLUSIVE VIEW
BLISS INCLUSIVE

LIVE LIKE A STAR. WHERE THE SKY IS YOUR
PLAYGROUND. WATCH THE SUNSET IN THE
SANCTUARY OF YOUR PRIVATE BALCONY.
GLOW WITH THE JOY OF FULFILLMENT. WELCOME
TO THE HEIGHT OF LUXURIOUS LIVING.

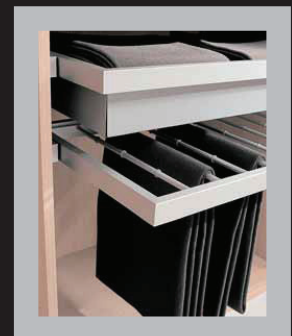
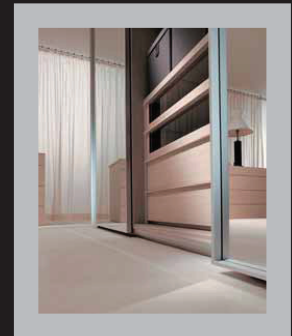
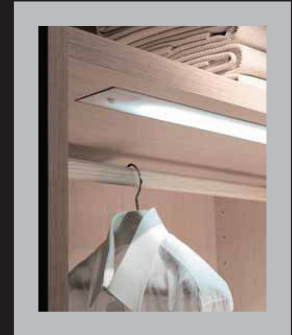


ARTIST'S IMPRESSION FOR TYPE B-G

EXCLUSIVE LUXURY
COMFORT INCLUSIVE



NEVER HAS A BEDROOM SEEN SUCH SOPHISTICATED ENHANCEMENT. WITH A CLEVERLY DESIGNED WARDROBE SYSTEM FROM ITALY'S LEMA, THE STORAGE SPACE BECOMES A FASHION PARADE. EXTRAVAGANT AND CHIC, LEMA WARDROBE DISPLAYS INTELLIGENT FUNCTIONALITY AND SEEMINGLY INFINITE SPACIOUSNESS.



ALL PHOTOGRAPHS FEATURED ARE IMPRESSIONS ONLY

BONTEMPI[®]
CUCINE

BEGIN YOUR DAY WITH SUMPTUOUS
BREAKFAST PREPARED IN A FLAWLESSLY
LUXURIOUS KITCHEN LINED WITH
CABINETS BY CELEBRATED ITALIAN
LABEL BONTEMPI. WITH A TOUCH OF
ELEGANCE, MODERN DESIGN AND
REFINED FINISHES, YOUR KITCHEN
BECOMES AN ERGONOMIC EXHIBIT.



ALL PHOTOGRAPHS FEATURED ARE IMPRESSIONS ONLY



Scholtès

SCHOLTÈS, A WELL-REGARDED BRAND FROM FRANCE THAT
SPECIALISES IN CRAFTING STATE-OF-THE-ART KITCHEN
APPLIANCES, SHOWCASES A CELEBRATION OF THE GOOD LIFE.

JUNG

WITH THE FINEST BRANDS FURNISHING EVERY FRAGMENT OF YOUR SANCTUARY IN IMPECCABLE FLOURISH, YOU WILL NEVER WANT TO LEAVE HOME. CRAFTED LIKE PROLIFIC ART PIECES, HANDSOME SANITARY FITTINGS BY GESSI FROM ITALY ADORN YOUR BATHROOMS.



APPLICABLE TO ALL UNITS
IMPRESSION ONLY

GESSI



INTELLIGENT AUTOMATION SYSTEM

26 NEWTON IS GENEROUSLY ENHANCED WITH THE RENOWNED JUNG KNX HOME AUTOMATION SYSTEM THAT PRIORITISES YOUR CONVENIENCE. THE USER-FRIENDLY SYSTEM LETS YOU REGULATE LIGHTING AND AIR-CONDITIONING VIA THE RADIO FREQUENCY REMOTE CONTROL WITHOUT LEAVING THE COMFORT OF YOUR SEAT. THE WI-FI-ENABLED SYSTEM ALSO ALLOWS PRE-SETTING OF YOUR HOME'S LIGHTS AND TEMPERATURE VIA IPHONE OR IPAD EVEN WHEN AT WORK OR AT PLAY. CUSTOMISE YOUR LEVEL OF CONTROL WITH ADDITIONAL OPTIONS TO CONNECT OTHER DEVICES TO THE SYSTEM.



Villeroy & Boch
1748

WITH OPULENT ENSEMBLE OF SANITARY WARES BY VILLEROY & BOCH, THE BATHROOMS ARE CHARACTERISED BY DELICATE CRAFTSMANSHIP AND FUNCTIONALLY DISTINCTIVE DESIGNS.

ALL PHOTOGRAPHS FEATURED ARE IMPRESSIONS ONLY

SITEPLAN



1ST STOREY

- A. SENTRY POINT
- B. DROP OFF POINT
- C. CAR PARK (OPEN TO SKY)
- D. GENSET
- E. BIN CENTRE

5TH STOREY

- 1. CHILDREN PLAYGROUND
- 2. PAVILION WITH BBQ CORNER

SKY TERRACE PLAN - 14TH FLOOR



LEGEND:

- 1. GYMNASIUM
- 2. CHANGING ROOM CUM TOILET AND SHOWER POINT
- 3. LOBBY
- 4. SWIMMING POOL
- 5. POOL DECK
- 6. OUTDOOR SHOWER
- 7. WADING POOL
- 8. CABANA

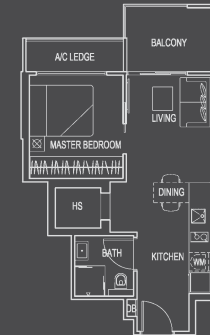
TYPE A
(1-BEDROOM)

UNIT #06-01 TO #13-01, #15-01 TO #24-01
 #06-08 TO #13-08, #15-08 TO #24-08
 #06-09 TO #13-09, #15-09 TO #24-09
 AREA 474 SQFT / 44 SQM



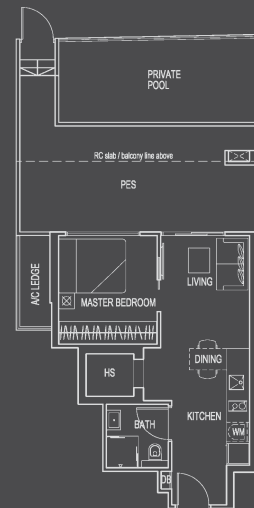
TYPE A1
(1-BEDROOM)

UNIT #06-04 TO #13-04, #15-04 TO #24-04
 AREA 484 SQFT / 45 SQM



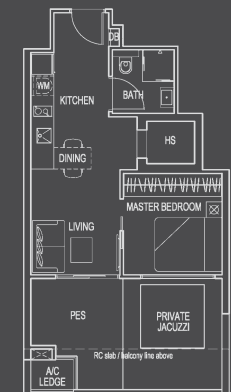
TYPE A1-G
(1-BEDROOM)

UNIT #05-04
 AREA 850 SQFT / 79 SQM



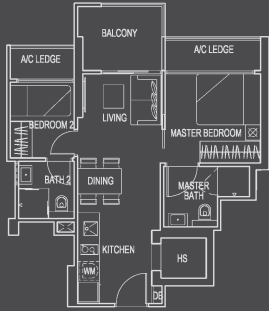
TYPE A-G
(1-BEDROOM)

UNIT #05-01, #05-08, #05-09
 AREA 570 SQFT / 53 SQM



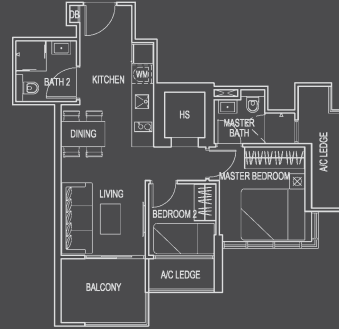
TYPE B
(2-BEDROOM)

UNIT #06-05 TO #13-05, #15-05 TO #24-05
AREA 560 SQFT / 52 SQM



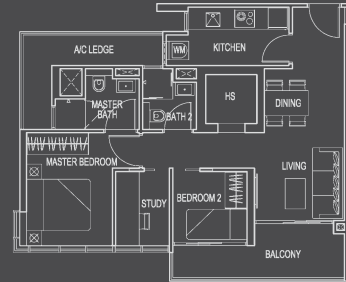
TYPE B1
(2-BEDROOM)

UNIT #06-07 TO #13-07, #15-07 TO #24-07
AREA 614 SQFT / 57 SQM



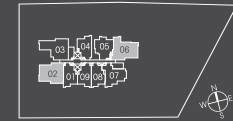
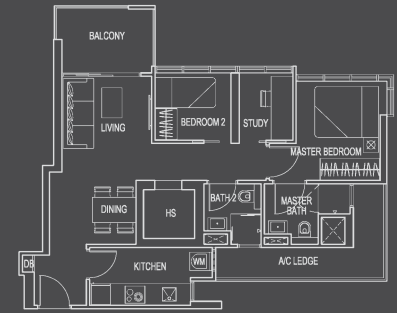
TYPE C
(2+1-BEDROOM)

UNIT #06-02 TO #13-02, #15-02 TO #24-02
AREA 775 SQFT / 72 SQM



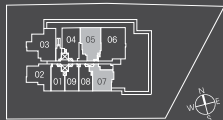
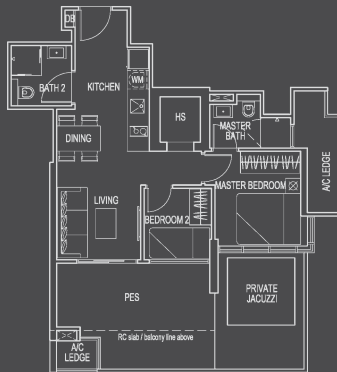
TYPE C1
(2+1-BEDROOM)

UNIT #06-06 TO #13-06, #15-06 TO #24-06
AREA 775 SQFT / 72 SQM



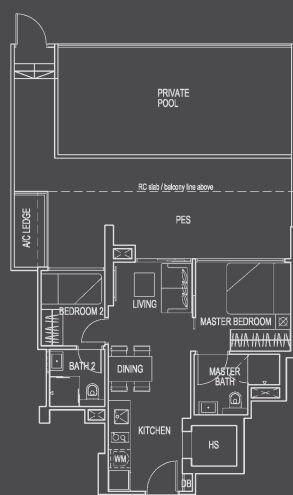
TYPE B1-G
(2-BEDROOM)

UNIT #05-07
AREA 807 SQFT / 75 SQM



TYPE B-G
(2-BEDROOM)

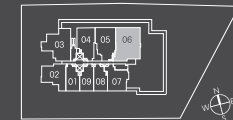
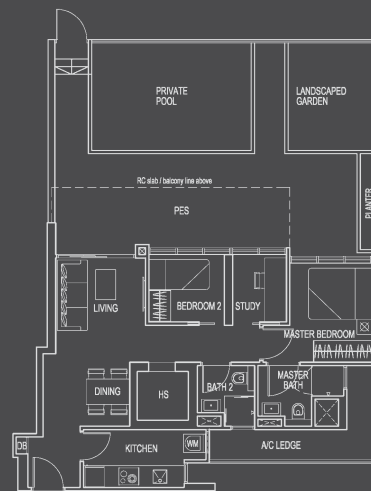
UNIT #05-05
AREA 1033 SQFT / 96 SQM



ALL PLANS ARE SUBJECT TO AMENDMENTS AS APPROVED BY THE RELEVANT AUTHORITIES.
FLOOR AREAS ARE APPROXIMATE MEASUREMENTS AND SUBJECT TO FINAL SURVEY.

TYPE C1-G
(2+1-BEDROOM)

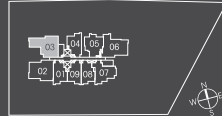
UNIT #05-06
AREA 1378 SQFT / 128 SQM



ALL PLANS ARE SUBJECT TO AMENDMENTS AS APPROVED BY THE RELEVANT AUTHORITIES.
FLOOR AREAS ARE APPROXIMATE MEASUREMENTS AND SUBJECT TO FINAL SURVEY.

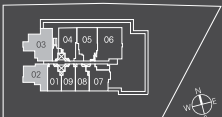
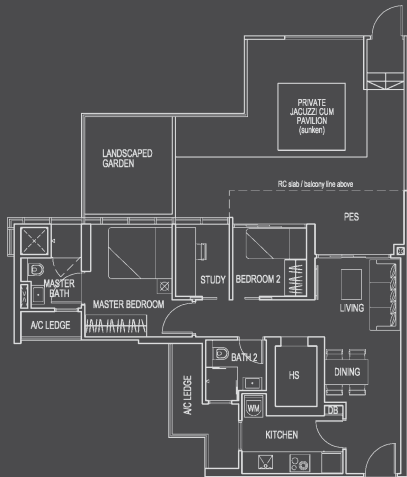
TYPE C2
(2+1-BEDROOM)

UNIT #06-03 TO #13-03, #15-03 TO #24-03
AREA 775 SQFT / 72 SQM



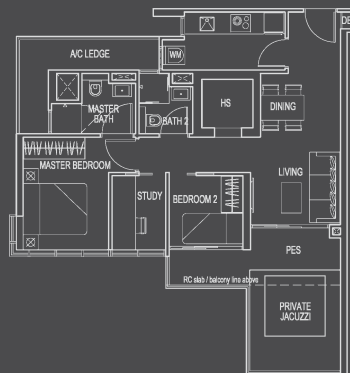
TYPE C2-G
(2+1-BEDROOM)

UNIT #05-03
AREA 1173 SQFT / 109 SQM



TYPE C-G
(2+1-BEDROOM)

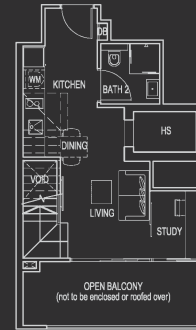
UNIT #05-02
AREA 850 SQFT / 79 SQM



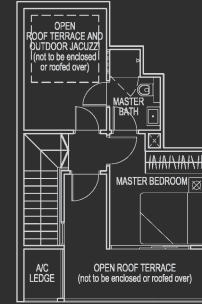
ALL PLANS ARE SUBJECT TO AMENDMENTS AS APPROVED BY THE RELEVANT AUTHORITIES.
FLOOR AREAS ARE APPROXIMATE MEASUREMENTS AND SUBJECT TO FINAL SURVEY.

TYPE A-P
(1+1-BEDROOM PENTHOUSE)

UNIT #25-01
AREA 947 SQFT / 88 SQM



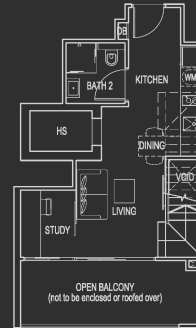
LOWER STOREY



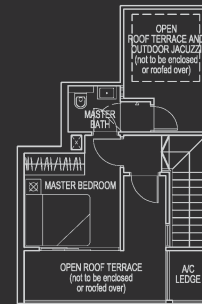
UPPER STOREY

TYPE A1-P
(1+1-BEDROOM PENTHOUSE)

UNIT #25-09
AREA 936 SQFT / 87 SQM



LOWER STOREY



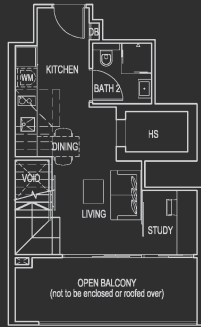
UPPER STOREY



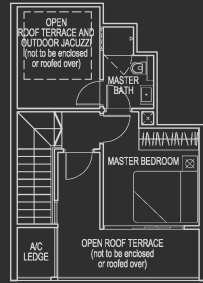
ALL PLANS ARE SUBJECT TO AMENDMENTS AS APPROVED BY THE RELEVANT AUTHORITIES.
FLOOR AREAS ARE APPROXIMATE MEASUREMENTS AND SUBJECT TO FINAL SURVEY.

TYPE A2-P
(1+1-BEDROOM, PENTHOUSE)

UNIT #25-08
AREA 926 SQFT / 86 SQM



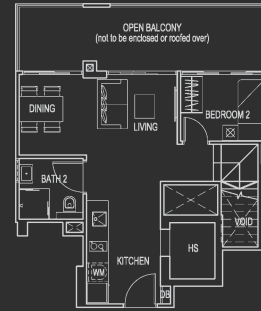
LOWER STOREY



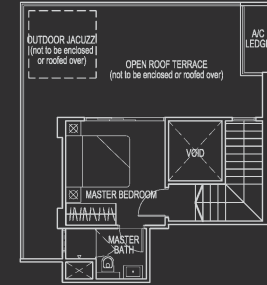
UPPER STOREY

TYPE B-P
(2-BEDROOM, PENTHOUSE)

UNIT #25-05
AREA 1163 SQFT / 108 SQM



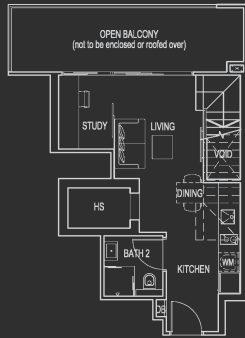
LOWER STOREY



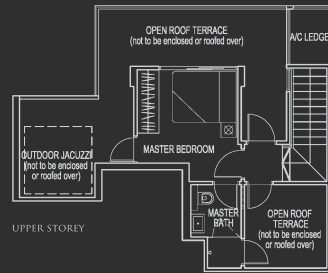
UPPER STOREY

TYPE A3-P
(1+1-BEDROOM, PENTHOUSE)

UNIT #25-04
AREA 1119 SQFT / 104 SQM



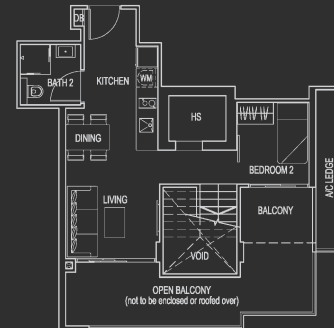
LOWER STOREY



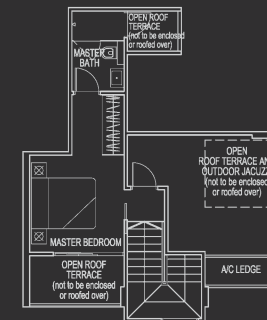
UPPER STOREY

TYPE B1-P
(2-BEDROOM, PENTHOUSE)

UNIT #25-07
AREA 1216 SQFT / 113 SQM



LOWER STOREY



UPPER STOREY



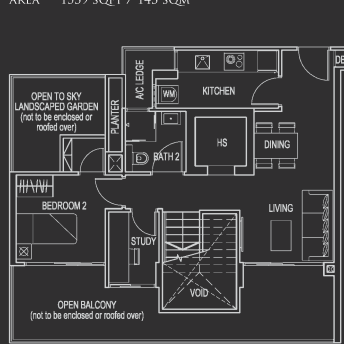
ALL PLANS ARE SUBJECT TO AMENDMENTS AS APPROVED BY THE RELEVANT AUTHORITIES.
FLOOR AREAS ARE APPROXIMATE MEASUREMENTS AND SUBJECT TO FINAL SURVEY.



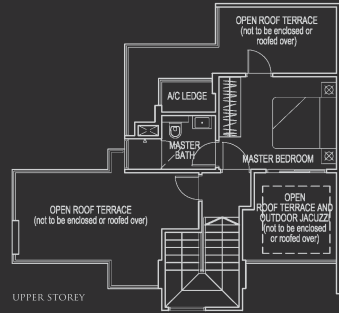
ALL PLANS ARE SUBJECT TO AMENDMENTS AS APPROVED BY THE RELEVANT AUTHORITIES.
FLOOR AREAS ARE APPROXIMATE MEASUREMENTS AND SUBJECT TO FINAL SURVEY.

TYPE C-P
(2+1-BEDROOM PENTHOUSE)

UNIT #25-02
AREA 1539 SQFT / 143 SQM



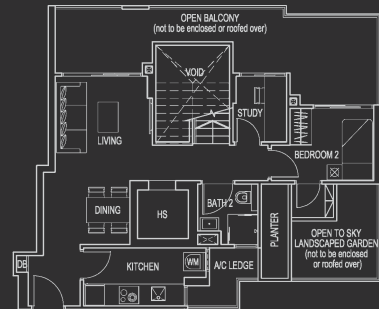
LOWER STOREY



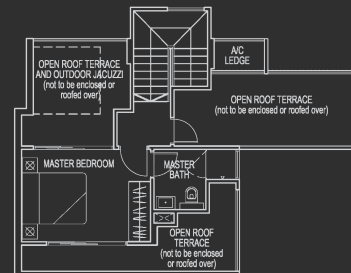
UPPER STOREY

TYPE C1-P
(2+1-BEDROOM PENTHOUSE)

UNIT #25-06
AREA 1539 SQFT / 143 SQM



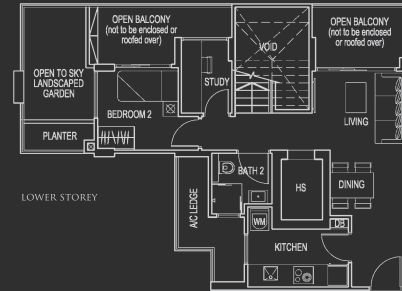
LOWER STOREY



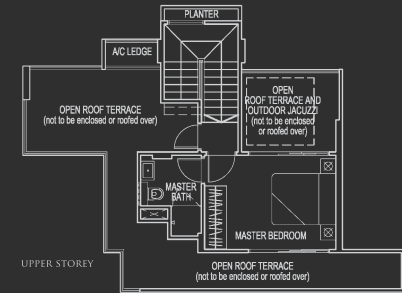
UPPER STOREY

TYPE C2-P
(2+1-BEDROOM PENTHOUSE)

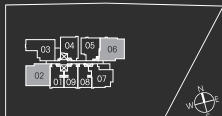
UNIT #25-03
AREA 1496 SQFT / 139 SQM



LOWER STOREY



UPPER STOREY



ALL PLANS ARE SUBJECT TO AMENDMENTS AS APPROVED BY THE RELEVANT AUTHORITIES.
FLOOR AREAS ARE APPROXIMATE MEASUREMENTS AND SUBJECT TO FINAL SURVEY.



ALL PLANS ARE SUBJECT TO AMENDMENTS AS APPROVED BY THE RELEVANT AUTHORITIES.
FLOOR AREAS ARE APPROXIMATE MEASUREMENTS AND SUBJECT TO FINAL SURVEY.

Another Quality Development By



DEVELOPER: NOVELTY CORP PTE LTD RP NO.: A0816-00340-2011-RP01 DATED 7 OCTOBER 2011 DEVELOPER'S LICENCE NO.: C0829 TENURE OF LAND: FREEHOLD
LOTS: 00709N TS28 AT 26 NEWTON ROAD EXPECTED TOP DATE: 31 DECEMBER 2016 EXPECTED DATE OF LEGAL COMPLETION: 31 DECEMBER 2019

WHILE EVERY REASONABLE CARE HAS BEEN TAKEN IN PREPARING THIS BROCHURE, THE DEVELOPER CANNOT BE HELD RESPONSIBLE FOR ANY INACCURACIES. ALL STATEMENTS ARE BELIEVED TO BE CORRECT BUT ARE NOT TO BE REGARDED AS STATEMENT OR REPRESENTATION OF FACTS. VISUAL REPRESENTATIONS, ILLUSTRATIONS, PHOTOGRAPHS AND RENDERINGS ARE INTENDED TO PORTRAY ONLY IMPRESSIONS OF THE DEVELOPMENT. ALL INFORMATION AND SPECIFICATIONS ARE CURRENT AT THE TIME OF PRESS AND ARE SUBJECT TO CHANGE AS MAYBE REQUIRED AND CANNOT FORM PART OF AN OFFER OR CONTRACT.